



**HKC**

# SOLAS SABB G3

## Grade 3 External Sounder

### Protection - with style

Introducing HKC's new look external siren - the updated SOLAS SABB G3, bringing you an eye-catching design for stand-out Grade 3 security. With a contemporary, modern design, the new siren comes with a colourful range of lids and lenses and free screen printing of your company logo, prominently displaying your brand.

As you'd expect from HKC, the emphasis on technical details means the SOLAS SABB G3 is packed solid with additional features designed for enhanced security and resilience, such as remote and local testing, pry-off and lid tampering sensors and a high-intensity strobe.

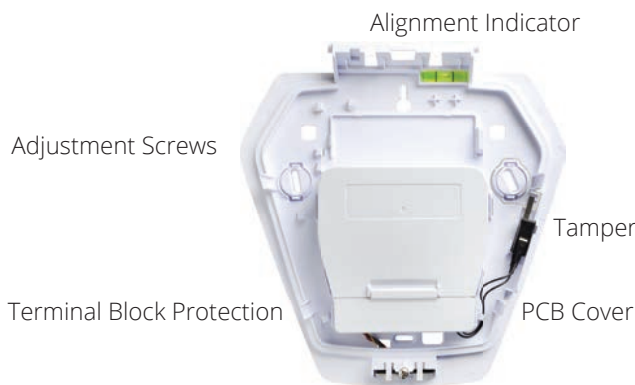
The product's robustness comes from its polycarbonate housing, conformally-coated electronics and fully-encapsulated, waterproof LEDs giving you confidence you're providing an enduring solution.

The new Grade 3 SOLAS SABB G3 is incredibly flexible too with programmable guard timer, sound output levels and lighting, giving you eye-catching, robust security - with style.

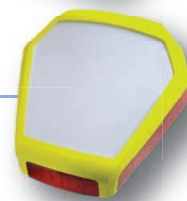
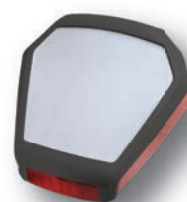
The **Smart Choice** for  
the **Professional Installer**

## Exploring the SOLAS SABB G3

Variety of Lid Colours



Choice of Lens Colours



## Key Features

- Polycarbonate Housing
- Monitored rechargeable backup battery pack
- Removable/Hinged captive lid
- Free Lid Logo Printing
- Switchable backlight to illuminate printed logo
- Low, Medium and High Sound Output
- High Intensity Strobe and comfort LED's
- Spirit Level Alignment indicator
- Electronics Protected and terminal blocks covered
- SAB/SCB Mode
- Diagnostic Mode for ease of fault finding
- Encapsulated, waterproof LEDs
- Pry-off and Lid Tamper Detector
- Remote test input - allows for a manual test of battery condition and latches the fault output if battery has failed

- Fault output - latches if bell trigger cable is disconnected or SABB battery failure is detected
- Low supply voltage detection - Bell tamper will activate
- Multiple lens colours – Red, Blue, Green\*, Amber\* & Clear\*
- Multiple lid colours – Black, White, Blue, Yellow and Red\*
- Strobe and siren test available
- On board Guard timer options
- No DIP Switch settings required
- EN50131-4
- EN Grade 3
- Environmental Class IV

(\*Options made to order, MOQ's apply)

## Technical Specifications

Quiescent Current:	10µA
Total Current in alarm:	210mA (peak)
Siren:	108dBm at 1m
Weight:	910g
Size:	265mm x 282mm x 80mm
Temperature:	-25 °C to +60 °C



The **Smart Choice** for  
the **Professional Installer**