



HKC

SOLAS SABB

External Sounder

Protection - with style

Introducing HKC's new look external siren - the SOLAS SABB, bringing you an eye-catching design for stand-out security. With a contemporary, modern design, the new siren comes with a colourful range of lids and lenses and free screen printing of your company logo, prominently displaying your brand.

As you'd expect from HKC, the emphasis on technical details means the SOLAS SABB is packed solid with features designed for additional security and resilience, such as RF jamming detection, pry-off and lid tampering sensors and a high-intensity strobe.

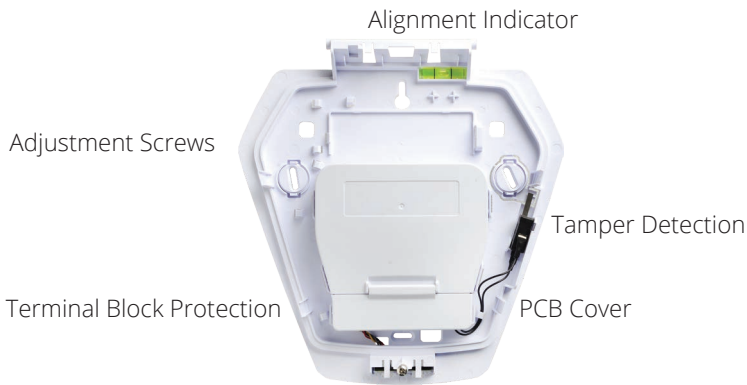
The product's robustness comes from its polycarbonate housing, conformally coated electronics and fully-encapsulated, waterproof LEDs giving you confidence you're providing an enduring solution.

The SOLAS SABB is incredibly flexible too with programmable guard timer, sound output levels and lighting giving you eye-catching, robust security - with style.

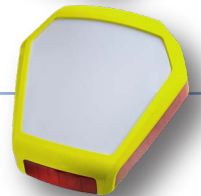
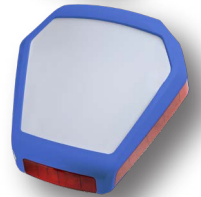
The **Smart Choice** for
the **Professional Installer**

Exploring the new SOLAS SABB

Variety of Lid Colours



Choice of Lens Colours



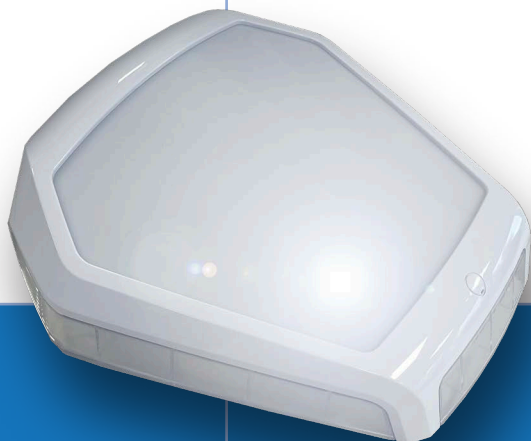
Key Features

- Polycarbonate Housing
- Monitored rechargeable backup battery pack
- Removable/Hinged captive lid
- Free Lid Logo Printing
- Switchable backlight to illuminate printed logo
- Low, Medium and High Sound Output
- High Intensity Strobe and comfort LED's
- Spirit Level Alignment indicator
- Electronics Protected and terminal blocks covered
- SAB/SCB Mode
- Diagnostic Mode for ease of fault finding
- Encapsulated, waterproof LEDs
- Pry-off and Lid Tamper Detector
- Quick installation
- Multiple lens colours – Red, Blue, Green*, Amber* & Clear*
- Multiple lid colours – Black, White, Blue, Yellow & Red*
- Strobe and siren test available
- On board Guard timer options
- EN50131-4
- EN Grade 2
- Environmental Class IV

(*Options made to order, MOQ's apply)

Technical Specifications

Quiescent Current:	10µA
Total Current in alarm:	210mA (peak)
Siren:	108dBm at 1m
Weight:	910g
Size:	265mm x 282mm x 80mm
Temperature:	-25 °C to +60 °C



The **Smart Choice** for
the **Professional Installer**